

AWARD

A Catholic church for a small Minnesota town is well planned and in harmony with the surrounding residential neighborhood.

Progressive Design Associates, Inc., Architects
George Rafferty, Partner in Charge of Design
Frank Mikutowski, Partner in Charge of Production
Schuett & Meier, Structural Engineers
Robert Diedrich, of Progressive Design Associates, Inc.
Mechanical Engineer
Frank Kacmarcik, Liturgical Consultant

PROJECT St. John the Evangelist Catholic Church.
LOCATION Hopkins, Minnesota.
SITE A nearly level area, containing a school building and rectory, surrounded on three sides by residential streets.

PROGRAM To provide a church seating 700 people, having a baptistry area integrated with the nave area at its entrance. Also required were a small chapel, containing the Eucharistic reservation for the entire church, a community center with kitchen for caterer's use, a library, administrative facilities, garage facilities, and guest quarters. Only one corner of the site was available, due to a pre-existing restrictive covenant. The church was to be connected physically with the existing school.

DESIGN SOLUTION The architects wanted to design a church that would harmonize with the neighborhood of well-maintained, single-family homes in which it was to stand. The school building on the site was bulky and unattractive, and an effort was made by the architects to mitigate the total effect of the building complex by a careful attention to the materials and scale of the new work.

The church is oriented so that liturgical east is compass west. A spacious narthex at the north end of the church leads to all parts of the new building and to the school. The baptistry area is open to the nave at its entrance, in conformance to present-day liturgical requirements. The church interior is skylighted, with no windows. The guest quarters, containing two bedrooms, are situated over the garage.

CONSTRUCTION AND MATERIALS Reddish-buff brick bearing walls throughout. Church interior walls to be painted white. Coffered concrete ceilings for all spaces except the church, which will have an open roof of steel trusswork with a ceiling of 1" x 6" cedar boards. Dark slate floors.

JURY COMMENT — Rather understated in presentation, but it's like a garment—the more you wear it, the more you like it.

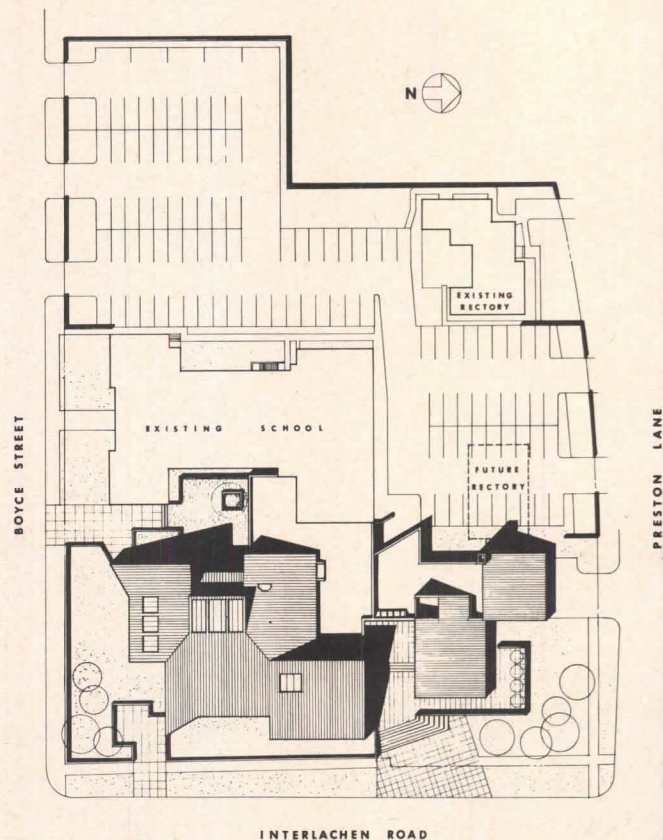
— It's a very mature solution; it's a growing, evolving kind of plan that houses several functions, and it's well resolved.

— It's rare to have a church with these other functions, which nowadays are so often attached to it, worked out so that the supporting functions are really subsidiary and supporting to the main church, not making something non-churchlike.

— Good exterior-interior relationship. It conveys the notion of the church-community home.

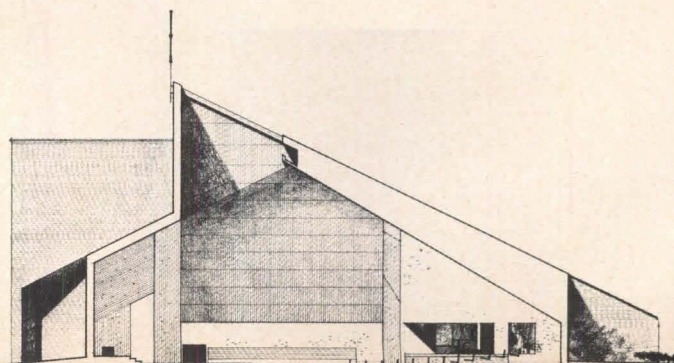
— Nice handling of light.

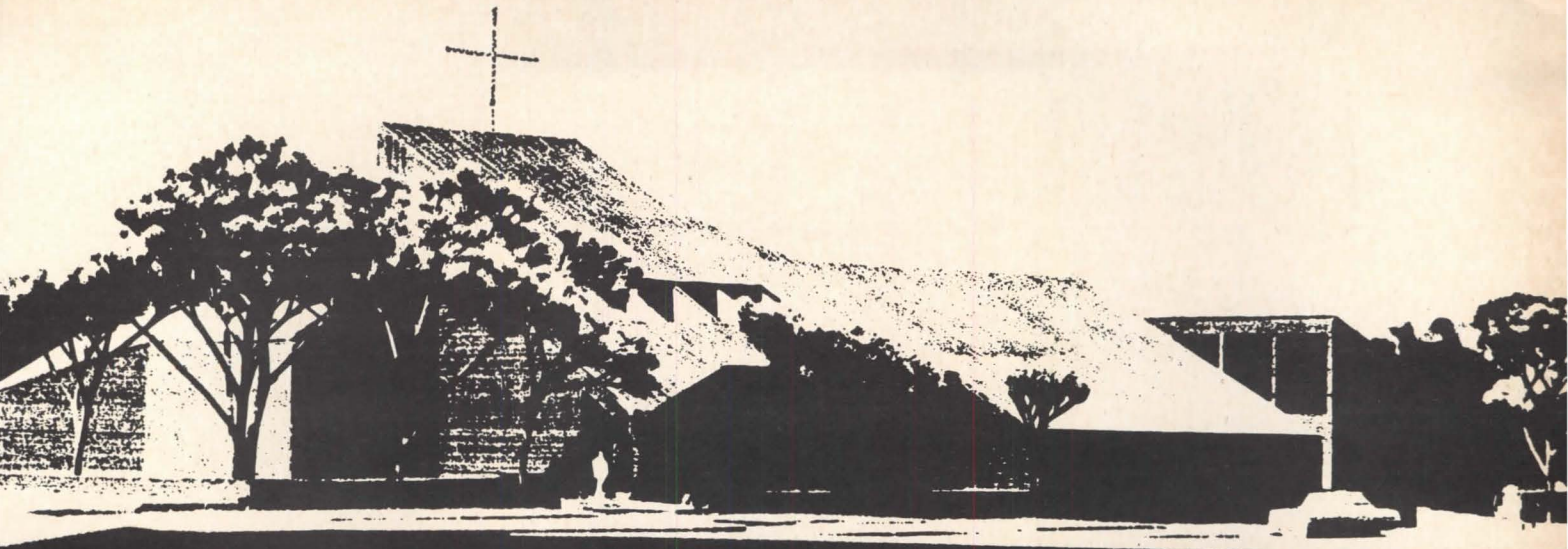
— It also has a certain basic simplicity. Structurally, it is solved without much difficulty.



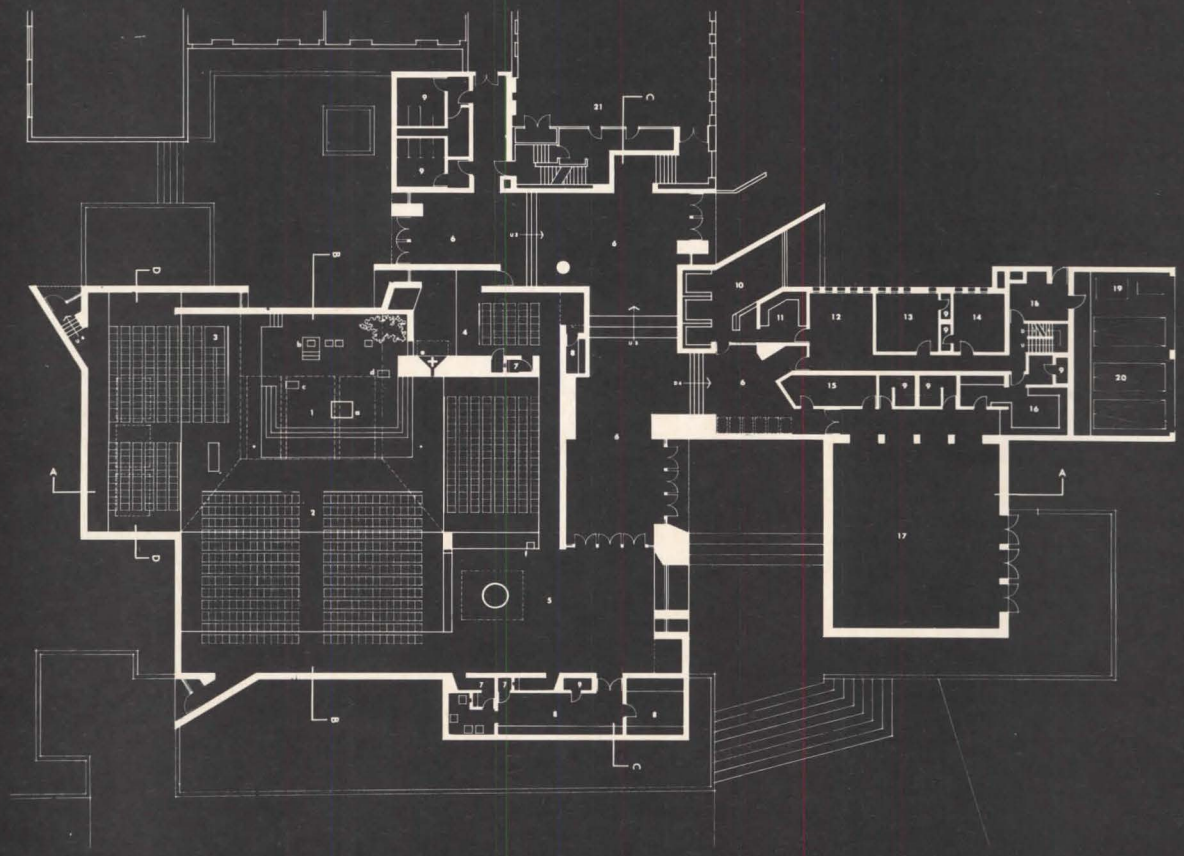
Site Plan

Rafferty
Mikutowski

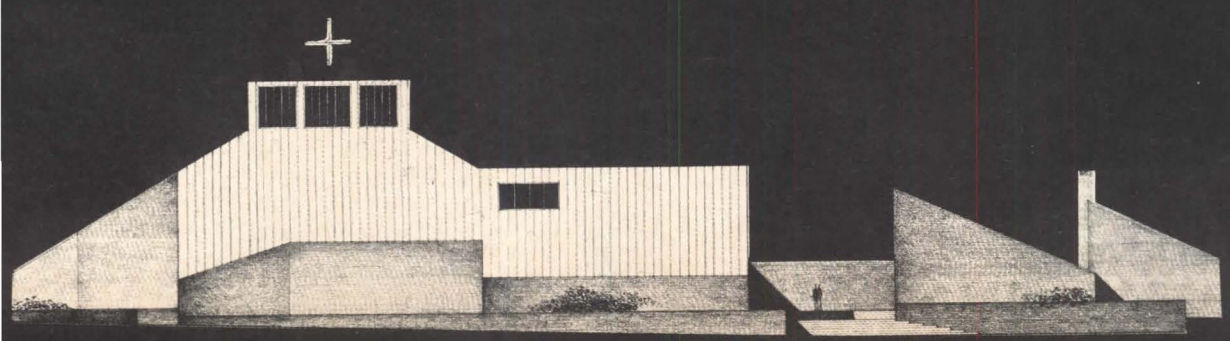




Photos and model: Terrell Whitehill



Floor Plan



East Elevation